



Fall/Winter 2003 Update

Fall/Winter Summary

Inside this issue:

Fall/Winter Summary	1
Jamestown Conference Presentation	1
Virtual Fairfield: Fairfield Website and CD-ROM	2
Architectural Interpretations of Fairfield: 1932 and 2003	2 3
Membership News	4
Welcome to New and Renewed Members	4

Fairfield Facts:

- In 1775 Lewis Burwell (1737-1779) lost his 'Horizontal Gold Watch' somewhere between his house and Gloucester town. He offered a reward of 50 shillings for its return.
- On June 4, 1787, Lewis Burwell sold Fairfield and 500 acres to Robert Thruston for £1500.

The months raced ahead of us before we realized it was newsletter time! This issue will cover both Fall and Winter of 2003, and should be followed closely by the Spring 2004 issue. Though Hurricane Isabel hit this area hard in September, Fairfield and the lab at the Rosewell Visitor Center came through just fine. A few branches remain to be cleaned up, but by this spring the site should look better than ever. Outside plans for the next couple of months include continued spring cleaning and maintenance at the site, and excavating test units before we install new interpretive signs. The signs are in the lab, and we hope to place them at Fairfield this summer. They will help tremendously to convey the history and significance of

Fairfield plantation to visitors. In other news, the Fairfield Historic Highway Marker has finally been unveiled. Over a year in the making, Gloucester's newest marker stands along Route 17 in White Marsh, only minutes from the site. Fairfield board members unveiled the new sign in October. Special thanks go to everyone who contributed towards this permanent monument to Fairfield's significant past.



New Fairfield Historical Highway Marker

Jamestown Conference Presentation

For the third year in a row the Fairfield Foundation delivered a presentation at the annual Jamestown Conference, held this year in Colonial Williamsburg due to damage wrought by Hurricane Isabel on Jamestown Island. This presentation provided a summary of excavation results to date, and highlighted the

virtual models of Fairfield created by Nathan Miller. While we hope to continually revise and improve the models to use as educational tools, they were well received at the conference and looked great up on the big screen. Nathan deserves a lot of credit for producing these models.

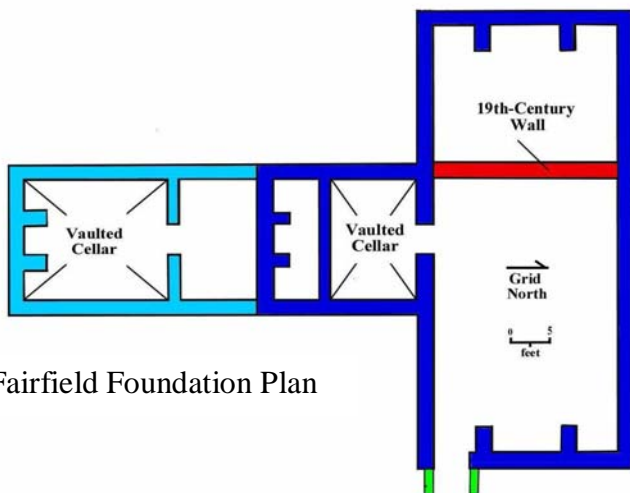
Virtual Fairfield: Fairfield Website and CD-ROM



The new Fairfield website has been on line for almost a year, and we are still making changes and additions. Eventually it will contain more excavation photos, historical research, articles, and much more. In addition the Foundation has recently completed an interactive and educational CD-Rom. Highlighting many of the

discoveries that have occurred during three years of excavation and research, this is an exciting new way to learn about the foundation's work. The CD-Rom contains pictures, maps, and all the computer models of Fairfield's architecture and landscape evolution that have been completed to date. It should be available soon.

Architectural Interpretations of Fairfield: 1932 and 2003



Fairfield Foundation Plan

Pictured at the top of the next page is an elevation drawing of the east façade of Fairfield by Thomas T. Waterman. It was published in 1932 in Waterman and Barrows' *Domestic Colonial Architecture of Tidewater Virginia*. The drawing was based on historic photos as well as a site visit. His use of casement windows reflects a hypothesized 17th-century appearance, and this view emphasizes the supposedly earlier south wing of the house (left side; shown in light blue above). We now know, through archaeology and a detailed analysis of the photos, that the south wing was actually added later, probably in the early 18th century.

The bottom image is a computer model of how Fairfield may have looked around 1720. By this

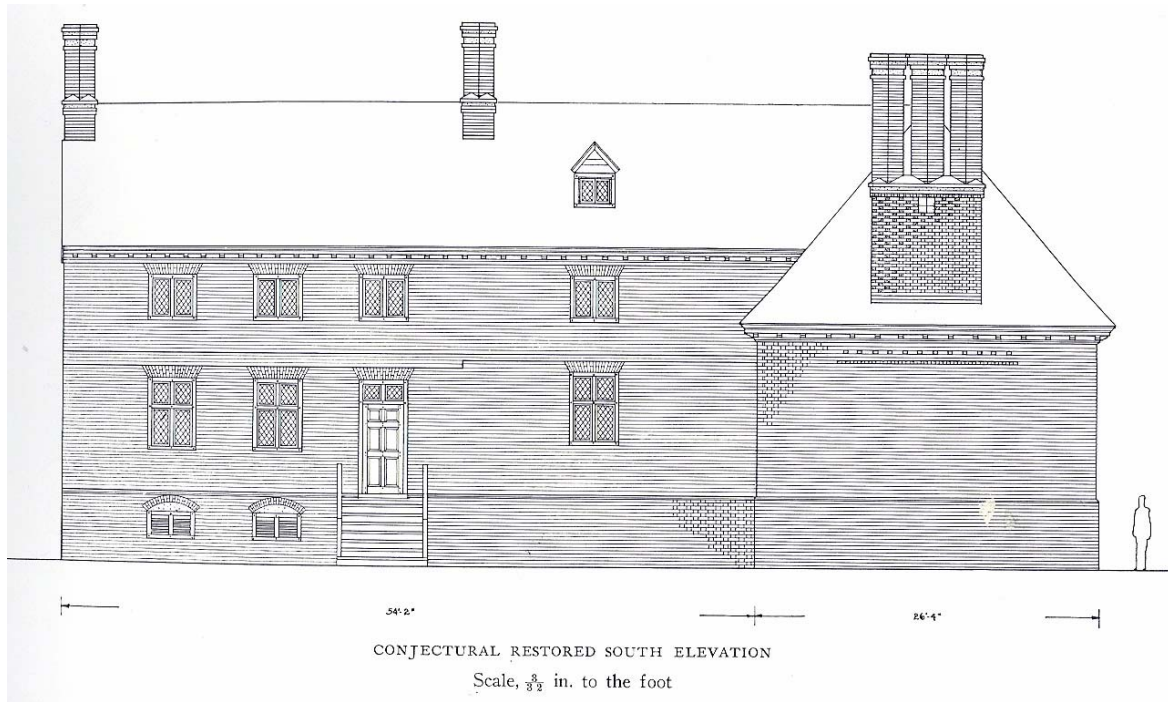
time the house had reached its full size. While casement windows may have been an original feature, so far no evidence for their presence has turned up. By the early 18th century, sash windows were being used on prominent buildings in the colony, and the status of the Burwell family combined with the quality of their house implies that they would have used sash windows. The age of the dormers is also in question, but it seems reasonable that dormers may have been an original feature, given the amount of usable space on the upper floor of the 1694 portion of the house. Any new evidence that supports or refutes these suggestions will be carefully analyzed as excavations and research continue.

Other differences between these views include the presence of only one cellar window on the east side, the more impressive height of the triple diamond-shaped chimney stacks, and the inclusion of a cellar entrance. The cellar window is an unusual feature in that it would have had to pierce through a vaulted wall to let light into the cellar. This may have been a later addition, or perhaps just a false window. The cellar entrance is also original, but it was altered in the 19th century.

Excavations at Fairfield continually lead to new discoveries and more questions. Waterman was unarguably correct when he noted in his book, "undoubtedly much will come to light... when the foundations are completely excavated."



Architectural Interpretations of Fairfield: 1932 and 2003



Drawing of Fairfield's east façade by Thomas Waterman, c. 1930.



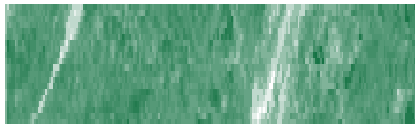
Model of Fairfield's southeast façade circa 1720, by Nathaniel Miller, 2003.

**FAIRFIELD
FOUNDATION, INC.**

P.O. Box 157
White Marsh VA 23183
Phone: 804-694-4775
Email: fairfield@ccsinc.com



1847 Sketch of Fairfield



The well-preserved brickwork of the vaulted cellar.



The Fairfield Foundation is a 501(c)3 not-for-profit organization dedicated to the archaeological study of the Burwell plantation in Gloucester County, known as Fairfield/Carter's Creek. The foundation has launched an extended investigation into all aspects of this colonial plantation, with the goal of studying, preserving, and presenting this new knowledge to the public.

Membership News

Thanks to all of you who generously donated your time and money to Fairfield during 2003. A year has passed since we began our membership drive, and we encourage all of you who have not renewed your membership to do so at this time. All gifts are welcome and tax deductible. For your convenience we're including the membership levels here- they can also be found on the website. Please pass on this information to anyone you know who may be interested. Thank you!

Annual Giving Levels:

Basic	\$15
Family	\$25
Friends of Fairfield	\$30 - \$99
Carter Creek Society	\$100-\$499
Landmark Society	\$500-\$999
1694 Society	\$1000-\$2499
Lewis Burwell Society	\$2500 and up

Check Us Out On The Web at
www.fairfieldfoundation.org

Welcome to New and Renewed Members

Thanks to the following returning members:

Family

Rodney and Karen Lorence

1694 Society

Peter and Barbara Hunt

Friends

Warren Chauncey
Philip Morton

Lewis Burwell Society

Stacy B. Lloyd III
Fred L. Brown Charitable
Foundation

Carter Creek Society

Emily and Bart Barbee
Will R. Gregg, Jr.
William and Sharon Parr